

100% electric

MT 625E



Scan and find out
more information
on [manitou.com](https://www.manitou.com)

 **MANITOU**
HANDLING YOUR WORLD

Securing the operators and their environment

Manitou is committed to designing machines that provide optimal safety for users.

- **Immobilizer belt**
This option prevents the operator from starting the machine if the seatbelt is not properly fastened.
- **Machine under load alert**
Cannot start the machine when it is plugged in!
- **Optimal visibility**
On the load and at 360°.
- **Joystick with driver presence detection**
The JSM® presence detector prevents unwanted movements and ensures total safety for the operator and his environment.
- **Automatic parking brake**
With hill start assist.

SAFETY PACK

Optional device that accompanies and protects the driver. The driver is informed in real time of a manoeuvre that could expose him to a risk. It warns the teams on site of an operator's inappropriate behaviour and sends the information to the fleet manager. A simple tool for acquiring good reflexes!



Access to the videos of handling using the QR Code. Reduce Risks supports you in the use of your machine.



Maintenance
-56%
vs diesel

Significant reduction in your operating costs

Manitou is committed to reducing your total cost of ownership with minimal daily checks, low maintenance and low energy costs!



- **Robustness**
Heavy-duty telene bonnet, cylinders and hoses protected by the boom and batteries protected inside the chassis.
- **Fewer hours on the clock!**
Electric machines have between 20% to 30% fewer hours worked than diesel versions (idling time is almost non-existent).
- **LED lighting**
An economical, higher performance system with a longer service life.
- **Regeneration**
Accelerator pedal activates the energy regeneration system for lower fuel consumption and longer range.
- **Maintenance**
Machine designed for quick and easy access to components and lubrication points.



At your service

Focus on your core business and leave the rest to us! Experience the smooth transition to electric power with Manitou.

- **Connected solution**
Stay connected to your compact telescopic handler: view its position in real time, anticipate its maintenance and analyse its performance easily. And this on PC, smartphone or tablet.
- **Financing**
Not sure whether to buy or lease? Several financing solutions are available. Ask your dealer for advice.
- **Extended warranty**
Focus on your core business with a modular warranty extension.
- **Maintenance**
Take care of your Manitou with a maintenance contract. Delegate the maintenance to specialists and you will be assured of a proactive and irreproachable service. In case of resale, you preserve its value over time.
- **Customisation**
It is never too late to upgrade your Manitou with a wide range of retrofit options available.

Ease of use

Quick and intuitive to use :

- Manitou DNA preserved
- Intuitive, easy-to-use Harmony dashboard
- One speed only
- Automatic parking brake and hill start assist
- Easily identifiable coloured pictograms
- Start-up in less than 2 seconds!

Loading is done in a matter of seconds. A dedicated and secure storage space for the charging cable is located at the back of the machine near the socket.



6_m Height of work

2,5_t Capacity max.

3,40_m Offset max.

3 modes management



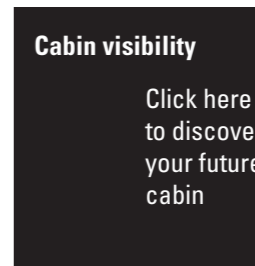
Easy access in the cabin
Without a step



Intuitive display
22 languages

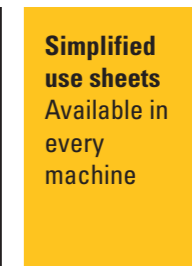


JSM ergonomic
For maximum comfort



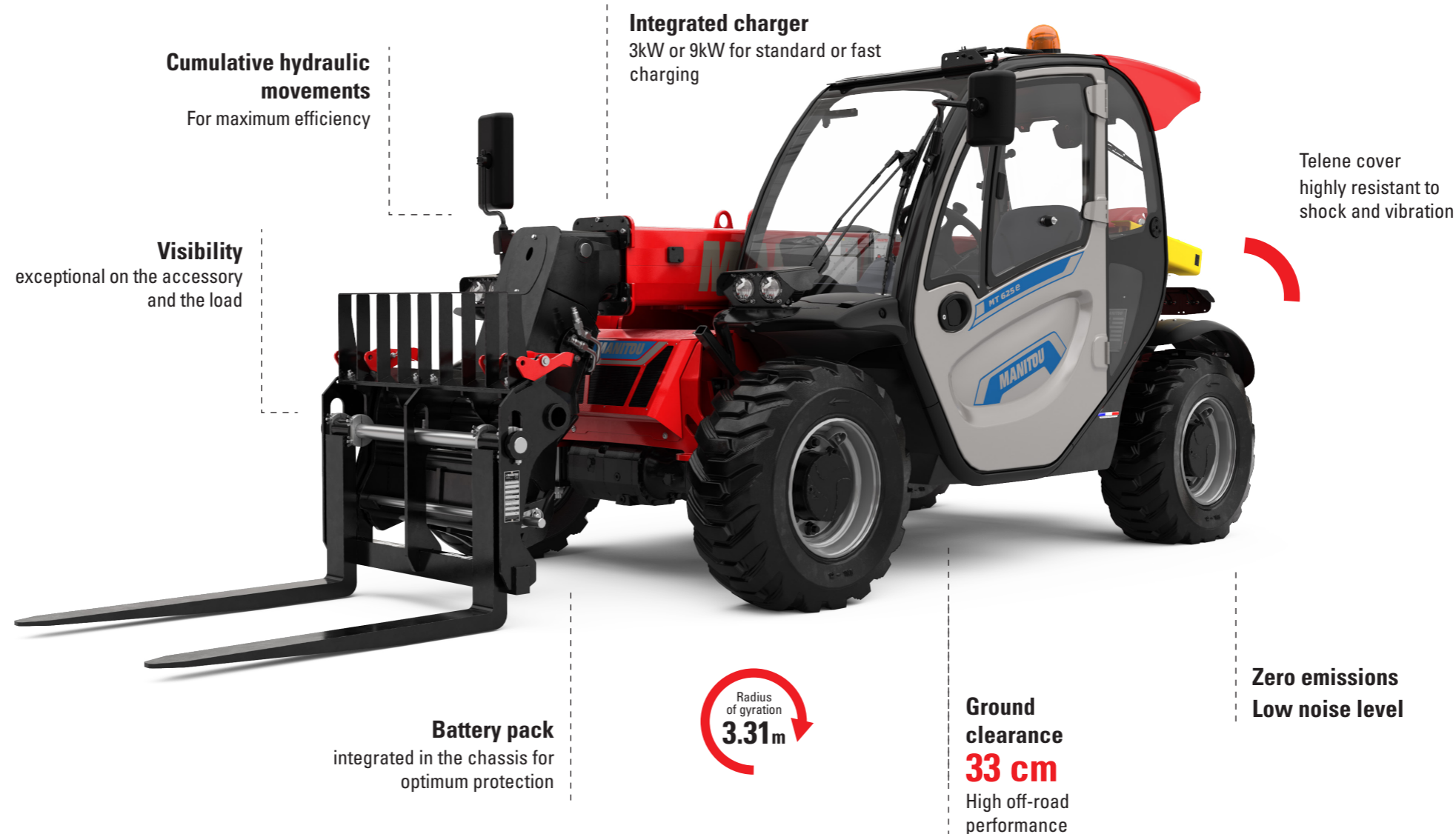
Cabin visibility

Click here to discover your future cabin



Simplified use sheets
Available in every machine

Electricity for the ultra-compact



Cumulative hydraulic movements
For maximum efficiency

Integrated charger
3kW or 9kW for standard or fast charging

Visibility
exceptional on the accessory and the load

Telene cover highly resistant to shock and vibration

Radius of gyration **3.31m**

Battery pack
integrated in the chassis for optimum protection

Ground clearance
33 cm
High off-road performance

Zero emissions
Low noise level

Take the step towards electric
Combining low emissions and performance. Without compromise.
The MT 625e is ideal for indoor applications, night work, urban and historical sites.
Wherever noise, low CO2, NoX and particulate emissions are required. It remains the telescopic handler for all your material handling applications, even in the most demanding difficult conditions!

Why choose the Lithium-ion ?
The MT 625e is equipped with a Lithium-ion battery. This technology has many advantages, such as low maintenance requirements and the possibility of opportunity charge (partial and frequent recharging of the battery). The useful capacity of a lithium-ion battery and its lifetime are also among the best! Not to mention its climatic resistance and its efficiency close to 100%.

Cost of transport reduced
Optimal dimensions for safe loading and transport.
SLINGING/STOWING
Lashing and slinging points identified and accessible at the front and rear of the machine.
FOLDING FORKS
Forks can be attached to the deck to save length. Safe road travel.

Incredibly compact
Thanks to its ultra-compact size and flashing light, your machine can easily pass through garage doors, basements and work in tight spaces.





ZERO COMPROMISE on performance

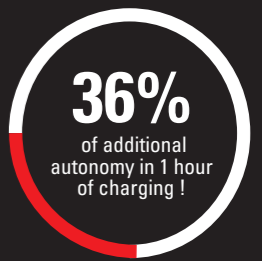


Autonomy and charging time

- Up to one day's work!
- Possibility of connecting the machine to 400V.
- A full charge in 2h 10 with the 9KW fast charger or overnight with the standard charger

Performance and off-roading

- An optional BOOST mode for improved hydraulic and traction performance.
- Off-road capability thanks to excellent ground clearance of 33cm and ramp clearance of up to 46% ramping.



Versatility at the service of your daily life

Manitou telescopic handlers are true tool carriers on which you can easily attach the Manitou-approved accessory specifically adapted to your application.

Floating fork carriage

The essential accessory for handling palletised loads. Forks fold down for easy transport and driving on the road.



Hook Stem

Simple and safe accessory for handling suspended loads. Short and light, it retains the maximum capacity of the truck.



Recovery bucket

This bucket is dedicated to all construction applications to move bulk material with a maximum density of 2100kg/m³.



Sweeper

High performance cleaning solution for non-intensive applications. Available with an optional 120 litre water sprayer.



Material basket

Efficient and cost-effective solution for moving materials safely in all types of applications, environments and weather.



Big Bag Handler

Total capacity 2400kg, 4 slots of 600kg each. Welded stops to limit the risk of falling of the bags.



QUICK AND EASY TO HOOK UP

With the Manitou carriage, you can change your attachment easily and in seconds.

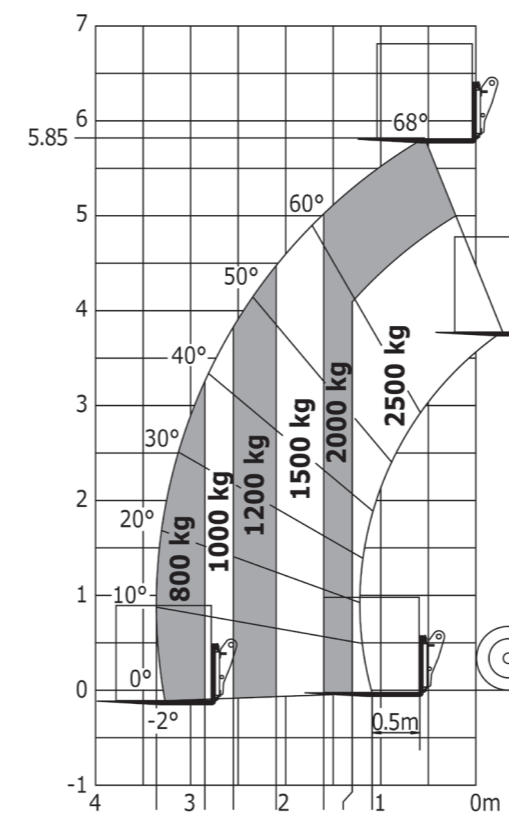
OPTIMISED ACCESSORIES

Offering more lightness and performance for better visibility and lower TCO.

HYDRAULIC LOCK

Optional hydraulic lock allows a non-hydraulic attachment to be changed and secured without leaving the machine.

MT 625 E



	MT 625 E
Capacity max. (kg)	2500
Offset max. (m)	3.40
Lifting height max. (m)	5.85
Battery technology	Lithium-ion
Battery capacity std / opt (kwh)	25 / 33
Integrated charger power std / opt (kW)	3 / 9
Overall weight (with forks) (kg)	4800
Overall height (m)	1.92
Overall width (m)	1.81
Overall length (m)	3.83
Ground clearance (cm)	33
External turning radius (m)	3.31
Environmental noise (LpA)	92
Noise at the driving position (LpA)	72

A tailor-made solution adapted to your needs



Non-marking industrial tyres

For use indoors and on hard floors.



Organic hydraulic oil
Easily biodegradable and non-toxic to reduce environmental impact.



Cry of the Lynx
Guarantees total safety on site while reducing noise impact.



Speed limit
Adjustment of the maximum speed of the machine to increase safety.



Centralized lubrication
Easier access to lubrication points to save time when servicing the machine!



« As a company or business owner, we have a duty to support the energy transition with our materials handling equipment. Using zero-emission and low-noise machines is becoming essential, but so is not losing productivity. This is why we are looking for low-emission, versatile and high-performance machines ! »

Your dealer



Scan and find out
more information
on [manitou.com](https://www.manitou.com)



This publication describes the versions and configuration possibilities of Manitou products which may differ in equipment. The equipment shown in this brochure may be standard, optional or not available depending on the version. Manitou reserves the right to change the specifications described and shown at any time without notice. The specifications shown are not binding on the manufacturer. For more details, contact your Manitou dealer. Non contractual document. Presentation and visuals of products are not contractual. The logos and visual identity of the company are the property of Manitou and may not be used without permission. All rights reserved. The photos and diagrams contained in this brochure are provided for reference purposes only. Manitou BF SA - Public limited company with a Board of Directors - Share capital: 39,547,824 euros - 857 802 508 RCS Nantes
Manitou ©Adobe stock